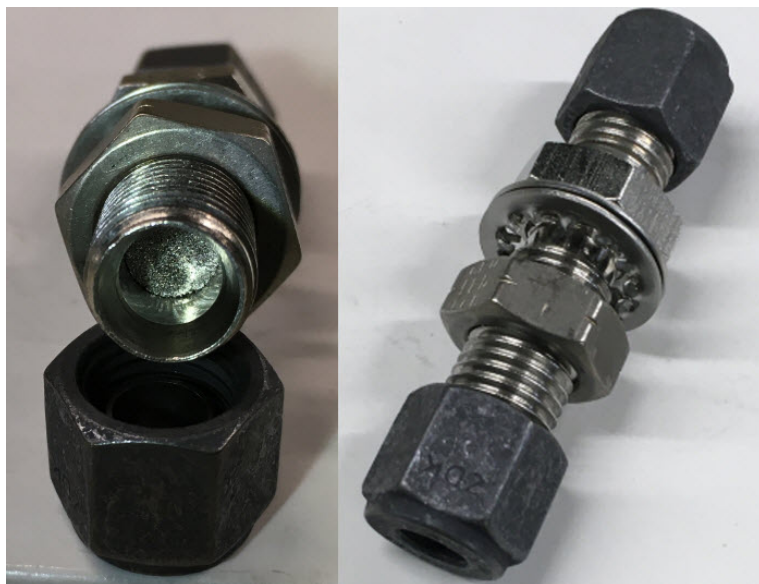


Item

25C0014R0

400A: Restrictor sample bulkhd SS CPI



Extended Description:

Replaces Rosemount p/n: 016432 & 017154

400A: bulkhead fitting, restrictor, sample, Stainless Steel. For sample inlet.SS, bulkhead 1/4" CPI to 1/4" CPI with embedded frits. Comes with two inside-star lock washers. Does NOT come with nuts and ferrules.

Flowrate: approximately 1000 to 3000 cc/min at 3 psid.

Cleaned / hydrocarbon free. Typically used on analyzers that don't have sample shutoff solenoid valves.

Price (US List): call

R I G A S
Industrial Gas Analyzers
2310 East Hutton Road
Wooster, OH 44691
330-345-5264
330-345-5944 (Fax)